

# Precise for DB2

## PERFORMANCE MANAGEMENT FOR IBM DB2 DATABASES

Database performance fuels company performance. DB2 databases are the system of record for business applications and as their performance goes, so go the performance of applications and the organization as a whole. Downtime and slow system performance can result in significant lost revenue, lower productivity, and increased support costs if not resolved quickly. When performance problems occur, database administrators (DBAs) are frequently the first called to troubleshoot, often without any proof of where the issue lies. Any number of monitoring tools can extract metrics and provide data alerts. However, if they present the problem without offering context for what is driving these metrics, then performance management is hit and miss. DBAs need a solution that provides insight into the real causes of performance bottlenecks to determine the root cause and resolve problems no matter where they exist in the stack.

## SOLUTION HIGHLIGHTS

Precise for Sybase helps ensure that your business applications perform at peak efficiency by collecting and analyzing key performance metrics over time. It can detect and correct the root cause of performance problems whether in the application, database, or storage. With Precise for Sybase, organizations can:

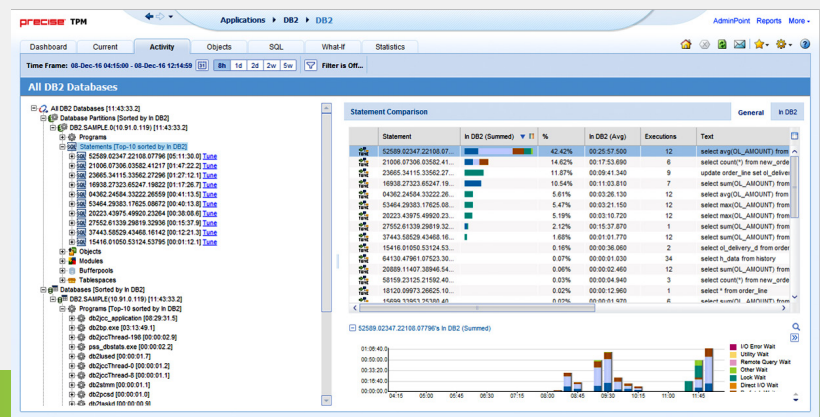
- Monitor all DB2 instances from a single console
- Optimize database performance tuning
- Accelerate problem resolution
- Reduce IT support costs

## KEY BENEFITS

- Identify performance issues before they impact users
- Pinpoint the root cause of SQL slowdowns
- Locate bottlenecks from URL to SQL to storage
- Detect trends from detailed historical performance data
- Maximize infrastructure investments by tuning performance and capacity planning

LEARN MORE

DETECT, DIAGNOSE  
AND RESOLVE  
PERFORMANCE PROBLEMS  
IN DB2 DATABASES



## PERFORMANCE MONITORING

### 24x7 DB2 Monitoring

Precise continuously monitors DB2 environments, analyzes DB2 database behavior to find the poorest objects or processes, and provides actionable diagnostic information to help DBAs tune performance. Historical statistics stored by instance, by user, and by program provide the necessary context to further help DBAs in seeing the whole picture. It can correlate transactions with web, network, application, or storage tier and even associate database transactions with end user sessions to trace problems quickly.

### Simplified Problem Isolation

Precise for DB2 quickly analyzes SQL statements, database objects, and DB2 instances to uncover specific causes of performance problems. It presents the DB2 access path in detailed steps and displays the statistics needed to understand each step so that you can isolate problems fast.

### Pinpoint Problem Root Cause

After identifying a performance problem, Precise allows DBAs to drill down in the context of the user transaction. This way, pinpoint the root cause of the problem, whether it is a poorly designed SQL statement, program, database object, or even a bottleneck due to a resource shortage in the underlying operating system, virtualization infrastructure, or storage.

### Comprehensive Dashboard

The easy to use dashboard consolidates and displays a broad range of relevant information on health and status at-a-glance. This single pane of glass simplifies and shortens the time required to view instance information across even the largest clustered environments.

### Performance Management Database (PMDB)

Precise works by tracking the path of transactions through all tiers of virtual and physical infrastructure and stores both the business context and performance details in a centralized repository, the Precise Management Database (PMDB). The software then correlates transactions with users, databases, devices, files, and objects being accessed to identify performance problems anywhere within the environment.

## DIAGNOSTICS AND ANALYTICS

### Proactive Tuning Recommendations

Precise provides DBAs with a library of knowledge and experience designed to help them tune their DB2 environment. Recommendations around SQL statement tuning, database object tuning, index tuning and index cost are just a few examples of the many recommendations available.

### Perform “What If” Analysis

Precise automatically identifies problem areas and provides actionable advice on how to address them. Before making any changes, DBAs can perform “what-if” analysis to predict the impact of proposed modifications to remove the risk of accidentally making things worse.

### Capacity Planning

DB2 databases are constantly growing and evolving. By connecting transaction performance with the infrastructure it touches, Precise for DB2 makes it easier to align server and storage capacity with the growing needs of the business.

### Performance Alerts

Precise proactively monitors DB2 performance by collecting the real-time status of key metric of performance and comparing them to established thresholds set by your organization. When a potential problem is detected, it can send notification in the interface or via email and can even take defined corrective actions.

### Detailed Historical Performance Analysis

View detailed DB2 performance counters, system availability, and job performance data over defined periods. Identify excessive resource consumption, slow transaction times, system downtimes and other signals for performance tuning actions.

### Enhanced Collaboration

Precise eliminates monitoring complexity by providing a single solution and a common set of data for all personnel across tiers. This unification facilitates collaboration among diverse teams and simplifies consulting additional domain experts that in turn drives faster problem isolation and resolution.