

PowerShellPlus™

Advanced PowerShell Development Environment

PowerShell Plus is the most advanced Interactive Development Environment for PowerShell available today. Designed to help administrators and developers quickly learn and master Windows PowerShell, it also dramatically increases the productivity of expert users.

PowerShell Plus features a powerful interactive console, an advanced script editor and debugger and a comprehensive interactive learning center all integrated into a single product. Try PowerShell Plus today and see how much more productive you can be!

PRODUCT HIGHLIGHTS

- Learn PowerShell fast using the Interactive Learning Center
- Execute PowerShell quickly and accurately with the powerful interactive console
- Take advantage of the PowerShell remoting features directly from the interactive console
- Access hundreds of pre-loaded scripts in the personal QuickClick™ library
- Download thousands of community scripts from PowerShell.com, TechNet and PosCode – directly from the PowerShell Plus console and editor
- Debug PowerShell 10x faster with the advanced script editor and easily share your scripts with the PowerShell community

KEY BENEFITS

Interactive PowerShell Console:

The PowerShell Plus Console allows you to work interactively with PowerShell from a feature-rich Windows UI. This integration makes working with PowerShell faster and easier to use than ever before.

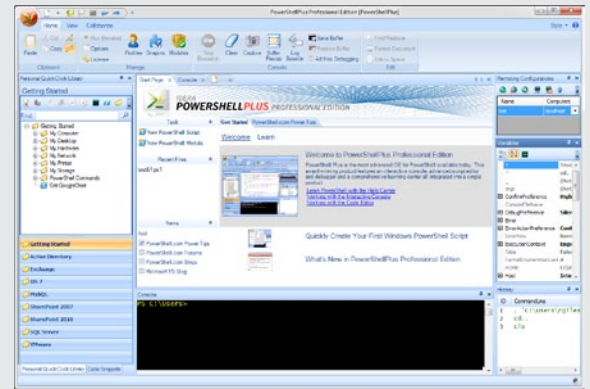
Advanced Script Editor:

The advanced debugger and script editor lets you build and test complex PowerShell scripts, try one line PowerShell commands from an embedded console window, and sign your script with a security certificate ... all from a single workspace.

Comprehensive Learning Center:

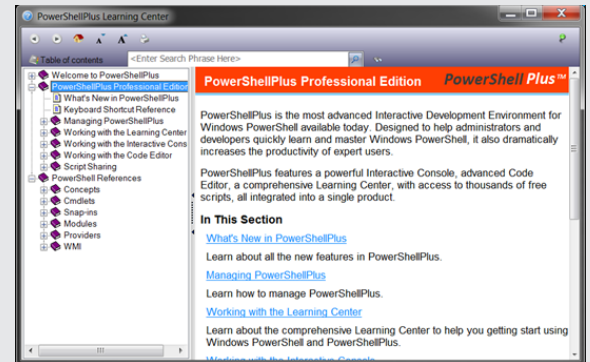
The Comprehensive Learning Center helps you experience PowerShell by example. Short tutorials guide you through basic concepts at your own pace. The Comprehensive Learning Center also includes dynamically created help topics from currently installed PowerShell CmdLets, Snap-Ins, and WMI objects.

idera™



Integrated Development Environment

PowerShell Plus is a single integrated development environment that maximizes productivity by providing configurable tool windows, a ribbon bar, a full featured editor and an embedded interactive console.



Learning Center

The Learning Center includes help topics for all of your installed Windows PowerShell providers, cmdlets, snap-ins, modules and WMI classes installed by Microsoft and other third party vendors.

SYSTEM REQUIREMENTS

- Microsoft PowerShell 2.0
- Windows 7 – x86 / x64
- Windows Vista – x86/x64
- Windows XP SP3 and higher – x86 and x64
- Windows Server 2003 SP2 and higher – x86/x64
- Windows Server 2008

DOWNLOAD A FREE 14-DAY TRIAL AT WWW.IDERA.COM

TECHNICAL FEATURES

INTEGRATED DEVELOPMENT ENVIRONMENT

- **Flexible user interface:** Provides Windows compliant ribbon bar and style manager for theme selection.
- **Start page:** Easy access to tasks, recent files, configurable News feeds and Getting Started topics.
- **QuickClick™ Library:** Organize scripts and commands that can be executed locally or remotely.
- **Find scripts:** Search and download scripts from PowerShell.com, Poshcode, and TechNet Script Center libraries.
- **Publish scripts:** Share your scripts with the PowerShell community by submitting them to PowerShell.com.
- **Collaborate:** Shares script with your team by retrieving, editing and saving them on a network share.
- **Remoting Configuration:** Pre-configure a common set of remoting properties, one or more computers and user credentials to execute scripts remotely or start interactive remote Console sessions.
- **Intellisense-style code completion:** Speed up entering commands in the Console or scripting in the Code Editor.
- **Code snippets:** Manage and reuse common scripting patterns.
- **Variables:** Provides information on all system and user variables defined in your current runspace.
- **Command History:** Quick access to your command history allows to you to view, run and use in the Code Editor.

INTEGRATED POWERSHELL CONSOLE

- **Configure Console:** Provide unique user experience for interacting with the Console inside the IDE.
- **Interactive Remote Session:** Manage remote computers right from your development environment.
- **Mini-mode:** Standard PowerShell Console without the IDE bells and whistles.

ADVANCED CODE EDITOR

- **Language Support:** PowerShell scripts and modules, XML, HTML, C#, VB.NET, VBScript, Batch Files, Plain Text and Snippets.
- **Integrated Debugging:** Step and inspect PowerShell scripts during execution.
- **Error List:** Display all syntax errors and interactively access lines that are in error.
- **CodeSign:** Configure certificates and use them to sign your scripts for secure execution.
- **Editor features:** Including code folding, bookmarks, breakpoints, formatting, find and replace, and much more.

COMPREHENSIVE HELP CENTER

- **Product Help:** Get started using PowerShell Plus with step-by-step examples.
- **Learn PowerShell:** Customized concept tutorials, a subset of PowerTips from PowerShell.com and an integrated copy of Mastering PowerShell by Tobias Weltner help you learn PowerShell fast.
- **Dynamic PowerShell Reference:** Provides detailed information on concepts, snap-ins, modules and WMI reference documentation generated from your PowerShell environment.
- **Full contextual help:** Use F1 at any time in the Console or Code Editor to get contextual help on any command.

idera™

2929 Allen Parkway, Suite 3200 Houston, Texas 77019

PHONE +1 713.523.4433
877.go.idera (464.3372)

FAX +1 713.862.5210
WEB www.idera.com

TWITTER www.twitter.com/Idera_Software
FACEBOOK www.facebook.com/IderaSoftware
LINKEDIN www.linkedin.com/groups?gid=2662613