

Idera SharePoint diagnostic manager™

Enterprise-class performance and availability monitoring for SharePoint

Idera SharePoint diagnostic manager is a powerful and intuitive monitoring solution that enables administrators to ensure SharePoint performance and availability all times. It analyzes a SharePoint environment's health and the performance of SharePoint applications, and saves time and money by dramatically reducing administrative overhead while enabling SharePoint user productivity.

SharePoint diagnostic manager provides real-time monitoring of SharePoint content and SharePoint servers from a single console, enabling performance and availability problems to be quickly identified, diagnosed and resolved. It also provides critical information for SharePoint capacity planning by storing historical performance data of all monitored SharePoint servers as well as capturing size and count information for the objects stored within SharePoint. It monitors SharePoint in real-time, providing a comprehensive set of metrics that enable SharePoint administrators to quickly pinpoint performance and availability issues related to server performance, resource usage and poorly performing HTML controls, web parts, and web controls.

WHY IDERA SHAREPOINT DIAGNOSTIC MANAGER?

In many organizations today, Microsoft SharePoint serves as a business critical application for users both inside and outside the organization. As a result, ensuring performance and availability of ever-expanding SharePoint farms with limited resources is arguably the most critical function SharePoint administrators face every day. In order to effectively manage Microsoft SharePoint, administrators need reliable, real-time information on the status and health of their complete SharePoint environment, diagnostic information to quickly pinpoint and resolve performance issues and analysis to determine the root cause of performance problems. Idera's SharePoint diagnostic manager meets all these needs by monitoring the health of your farms all day, every day, alerting you before problems affect users and providing valuable analytical information to help ensure problems don't recur.

PRODUCT HIGHLIGHTS

- Monitor performance and availability of your SharePoint farms content and servers
- Customized alerting on poorly performing pages, controls, and servers
- Intuitive dashboard UI provides 'at-a-glance' view of SharePoint health
- Historical repository enables trending and forecasting
- No agents required on monitored farm servers

KEY BENEFITS

Solve SharePoint performance problems even when SharePoint is not available

Because Idera SharePoint diagnostic manager runs outside of SharePoint, you have access to historical data, alerts issued, up to the minute performance information, and much more for all SharePoint servers in your farm. Idera SharePoint diagnostic manager helps eliminate the risk of spending hours trying to find out what might have caused your SharePoint environment to fail or perform badly.

Take control of your SharePoint health

Continuously monitor, diagnose, discover, analyze and fix SharePoint performance and availability issues efficiently. Quickly understand why your SharePoint servers are not performing well or why pages are taking long to load.

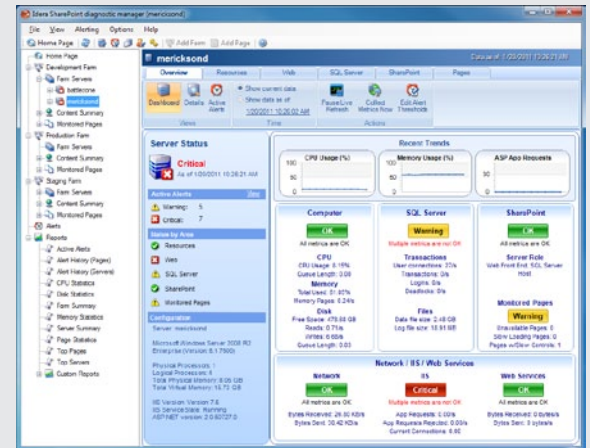
Out-of-the-box monitoring

Instant and automatic monitoring of all SharePoint farm servers without the need to develop any kind of script. Take advantage of built-in default options to start monitoring your SharePoint servers immediately.

Ensure that SharePoint content is available and performing well

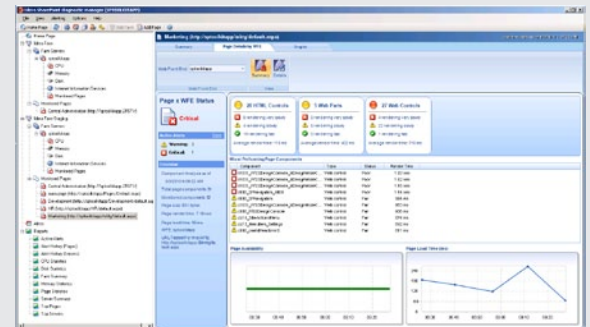
By monitoring key SharePoint pages across your farm, you can ensure that you are aware of the quality of service you are delivering to your users. If there is an issue you can be alerted via email as soon as the problem is occurring and have the data at hand to diagnose and solve the problem.

idera™



Single Management Console

Provides simultaneous, real-time monitoring of all SharePoint servers across multiple farms from a single console, making it easier than ever to quickly identify, diagnose, and resolve performance problems.



SharePoint Page Performance Monitoring

Provides granular, server-side performance data analysis for all SharePoint publishing and web part pages such as server controls, web parts, images, scripts, and much more.

SYSTEM REQUIREMENTS

Console

- 32-bit Windows 2000 SP4, Windows XP SP2, Windows Server 2003 SP2, Windows Vista, Windows 2008
- 64-bit Windows 2003 SP1 or SP2 (x64), Windows XP Professional or Windows Vista x64 and Windows 2008
- .Net 2.0 and MDAC SP1
- Monitor capable of displaying 16bit color or greater and a resolution of 1024x768
- SQL server 2005, SQL server 2008

SharePoint solution package

- MOSS 2007 SP1 or higher
- WSS 3.0 SP1 or higher
- SharePoint foundation 2010
- SharePoint server 2010

DOWNLOAD A FREE 14-DAY TRIAL AT WWW.IDERA.COM

KEY BENEFITS (CONTINUED)

Provides accurate and clean server-side performance metrics

Understand the real impact of the server side performance metrics without interference from browser type, location, operating systems and connection speed. Have control of how an application is behaving in its 'raw' state, and easily determine any application performance issues.

Complete SQL Server monitoring statistics

Never wonder whether your databases are slowing down SharePoint again! SharePoint diagnostic manager provides all the SQL Server insight you need, including configuration options and database fragmentation. See how your databases are allocated across drives and perform capacity planning using data and log file growth trends.

Quickly identifies worst performing page controls

Immediately identify the worst performing HTML controls, web parts and web controls by quickly analyzing their load time, size and type.

Collects Component-level results

Powerful collection of page control elements that clearly differentiates page loading, execution, or rendering of individual page elements. Quickly and easily identify what is impacting page performance, without guessing!

Provides true SharePoint-specific Analysis

Enables true visibility into SharePoint by exposing the inner workings of server controls, web parts, menus and other page elements. Using advanced methods, Idera SharePoint performance manager immerses into the page processing lifecycle allowing clear analysis of all the web page controls and parts before they are rendered into HTML and delivered to the user.

Get a view into the data stored into SharePoint

The farm content summary views let you see what is stored in your SharePoint farm. This view captures objects size, count and growth information enabling you to do capacity planning and proactively know when storage problems might develop.

Offers Easy installation and use

Installs quickly, enabling instantaneous performance access to any page. A typical installation takes less than 30 minutes. Additionally, the easy-to-use UI makes it very easy to identify all performance issues on a single page.

TECHNICAL FEATURES

Monitor SharePoint servers

- **Continuous monitoring of SharePoint performance:** Provides 24x7 monitoring of the performance and availability of your SharePoint performance and availability. Performance data is captured on for key SharePoint pages and servers and stored in a database for historical analysis.
- **Monitor SharePoint farm server availability:** Monitor critical areas of your SharePoint farm servers such as CPU, disk activity, IIS, memory and page utilization. Instantly understand what's causing your SharePoint environment to perform below agreed performance thresholds.
- **Monitor multiple SharePoint farms and farm servers from a central console:** Provides an easy to use console with rich information displays that allow multiple farms and all component servers to be monitored.
- **Complete SQL Server monitoring:** Detailed configuration options, database fragmentation and capacity planning data such as data and log file sizes and locations.
- **Detailed configuration data:** View complete and detailed information regarding the configuration of every SharePoint server in your farm.

Ensure page performance

- **Ensure SharePoint content is available and performing well:** Continuous monitoring of key SharePoint pages allows you to ensure that you are providing a high quality of service to your users.
- **Full web page coverage:** Provides granular, server-side performance data analysis for all SharePoint publishing and web part pages such as server controls, web parts, images, scripts and much more.
- **No limitation on pages being monitored:** Monitor the most important pages or all pages in your sites, without restriction. Choose how often pages should be monitored.
- **Easy URL based page performance analysis:** Analyze any web page in your farm by simply typing its URL.

Alert on SharePoint problems

- **Automated alerting:** Automated email alert notification whenever configurable performance thresholds are not met. Individual thresholds can be set for each monitored page or server.
- **Performance threshold customization:** Customize server level thresholds such as CPU, Memory, Disk, IIS, page HTML, web parts and web control alerting to meet the performance requirements of your applications and environment.
- **Granular control of alert responses:** Set up rules to control the response to alerts. Send emails only to those with responsibility for particular farms, servers or performance metrics. For example you can choose to send alerts on SQL Server only to your DBA.
- **SNMP Support:** The ability to generate SNMP traps in response to alerts allows you to integrate with Enterprise monitoring solutions such as Microsoft SCOM.

Report on Performance

- **Comprehensive reporting:** Idera SharePoint diagnostic manager provides reporting at the summary, server and page levels that allow you to monitor your SharePoint environment, analyze trends and plan for the future. Summary and detail performance metrics provide a comprehensive view of what's happening in your SharePoint environment at all levels.
- **Top server and top pages reporting:** Idera SharePoint diagnostic manager enables you to quickly identify the worst performing pages (Top Pages) or servers (Top Servers) for today or for the desired date range. These reports will save time finding content problems, and identify which SharePoint servers need the most attention first.

Capacity Planning

- **Farm Content Summary data:** Information about the farm content is captured including counts and sizes of objects contained in each farm. Allows analysis of content growth and provides alerts when thresholds are reached such as number of documents in a library
- **Capacity planning data:** Store historical performance data of your SharePoint farms, enabling rich graphical analysis of performance and behavior over time to identify patterns and trends.

Troubleshoot at a glance

- **Easy to use User Interface:** Powerful and easy to use console enables complex analyses to be displayed and understood in seconds, without the need to be a SharePoint expert.
- **Dashboard views:** SharePoint diagnostic manager's intuitive dashboard UI provides a quick view of SharePoint server health, enabling performance and availability problems to be quickly identified, diagnosed and resolved.

idera™

Idera is headquartered in Houston, TX with offices in London and Melbourne.

US +1 713 523 4433
877 GO IDERA (464 3372)
EMEA +44 (0) 1753 218410
APAC +61 1300 307 211
MEXICO +52 (55) 8421 6770
BRAZIL +55 (11) 3230 7938

WEB www.idera.com
TWITTER www.twitter.com/Idera_Software
FACEBOOK www.facebook.com/IderaSoftware
LINKEDIN www.linkedin.com/groups?gid=2662613