

ENSURE SHAREPOINT APPLICATION PERFORMANCE

SharePoint **performance manager**™

SOLUTIONS FOR PERFORMANCE & AVAILABILITY

Idera SharePoint performance manager monitors SharePoint pages in real-time. It provides a comprehensive set of performance metrics that enable developers and administrators to quickly pinpoint poorly performing HTML controls, web parts and web controls.

PRODUCT HIGHLIGHTS

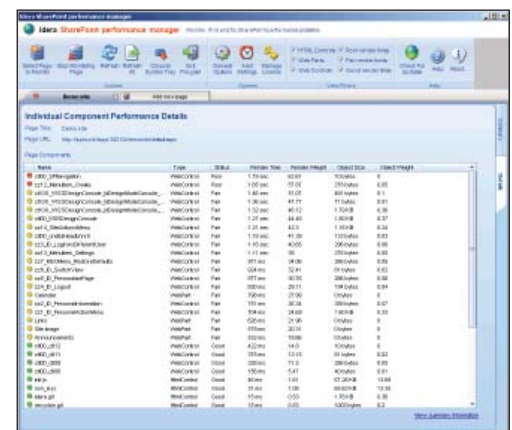
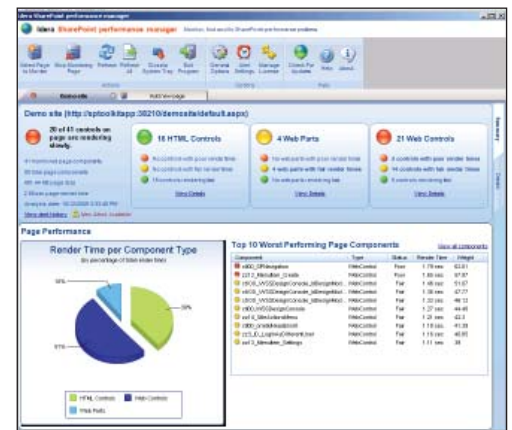
- Automated monitoring schedule for continuous performance analysis
- Intuitive dashboard UI provides 'at-a-glance' view of page performance
- Powerful 'Worst performing controls' view
- Convenient URL based page analysis
- Summary and detail metrics
- Automated alerting of poorly performing pages

Idera SharePoint performance manager console

Provides a powerful summary of any SharePoint page, including Top 10 worst performing page components and rendering time by HTML controls, web parts and web controls, allowing for fast and easy identification of page performance issues.

The Idera SharePoint performance manager 'Detail'

Provides a single place with detail information on HTML, web parts and web controls for further research on specific troubled page components.



Why SharePoint performance manager?

Idera SharePoint performance manager is a powerful and intuitive tool that enables developers and administrators to ensure the performance of their SharePoint applications. It increases user productivity and satisfaction, and also saves IT time and money by dramatically reducing the time to discover, analyze and fix SharePoint performance bottlenecks. SharePoint performance manager monitors SharePoint pages in real-time. It provides a comprehensive set of performance metrics that enable developers and administrators to quickly pinpoint poorly performing HTML controls, web parts and web controls.

SharePoint performance manager

ENSURE SHAREPOINT APPLICATION PERFORMANCE

KEY BENEFITS

Provides accurate and clean server-side performance metrics: Understand the real impact of the server side performance metrics without interference from browser type, location, operating systems and connection speed. Have control of how an application is behaving in its 'raw' state, and easily determine any application performance issues.

Quickly identifies worst performing page controls: Immediate access to the worst performing HTML controls, web parts and web controls by quickly identifying their load time, size and type.

Collects component-level results: Powerful collection of page control elements that clearly differentiates page loading, execution, or rendering of individual page elements. Easily identify what is impacting the page performance, without guessing!

Provides true SharePoint-specific Analysis: Enables true visibility into SharePoint by exposing the inner workings of server controls, web parts, menus and other page elements. Using advanced methods Idera SharePoint performance manager immerses into the page processing lifecycle allowing clear analysis of all the web page controls and parts before they are rendered into HTML and delivered to the user.

Offers easy installation and use: Installs quickly, enabling instantaneous performance access to any page. A typical installation might take less than 30 minutes. Additionally, the easy to use UI makes it very easy to identify all the performance issues on a single page.

TECHNICAL FEATURES

- **Powerful Worst performing Page controls view:** Provides a powerful overview of the worst performing page controls, with respective statuses, loading time and size.
- **Page-level statistics:** Provides instantaneous page level statistics for page size, status and execution time, number of controls, average control execution time, and much more.
- **Full web page coverage:** Provides granular, server-side performance data analysis for all MOSS publishing and WSS web part pages such as server controls, web parts, images, scripts, embedded objects (Silverlight, flash), and much more.
- **Alerts:** Automated Email alert notification whenever a threshold has been reached.
- **Threshold customization:** Customize HTML, web parts and web control alerting thresholds to meet the performance requirements of your applications and environment.
- **Scheduler:** Automated scheduler for continuous performance analysis of a web page.
- **Easy URL-based page analysis:** Analyze any web page within your farm by just defining the web page URL.
- **Easy-to-use UI:** Powerful and easy to use console, enables complex analysis to be achieved in seconds, without the need to be a SharePoint developer expert.
- **System tray operation:** Resides in the system tray for continuous web page monitoring enabling easy identification of page statuses plus console and email alerting.

SYSTEM REQUIREMENTS

CONSOLE:

- 32-bit Windows 2000 SP4, Windows XP SP2, Windows Server 2003 SP2, Windows Vista, Windows 2008
- 64-bit Windows 2003 SP1 or SP2 (x64), Windows XP Professional or Windows Vista x64 and Windows 2008
- .Net 2.0 and MDAC SP1
- Monitor capable of displaying 16bit color or greater and a resolution of 1024x768

SHAREPOINT SOLUTION PACKAGE:

- MOSS 2007 SP1 or higher
- WSS 3.0 SP1 or higher
5.3.3.0, 5.3.4.0, 5.4, 5.5
TSM Server version 5.2, 5.3, 5.4, 5.6

Idera | BBS Technologies
802 Lovett Blvd Houston, Texas 77006
PHONE 713.523.4433 | TOLL FREE 877.GO.IDERA (464.3372)
FAX 713.862.5210 | WEB www.idera.com



DOWNLOAD A FREE EVALUATION TODAY AT WWW.IDERA.COM