

# Idera SharePoint information architect™

Capture, visualize, edit and deploy SharePoint Taxonomies

Idera SharePoint information architect, a tool designed for SharePoint administrators, enables you to capture the architecture of your SharePoint farm, visualize it, make changes to it using a powerful graphical design environment and quickly deploy the changes to your production environment.

## WHY IDERA SHAREPOINT INFORMATION ARCHITECT?

SharePoint sites and content propagate extremely quickly. If the content is not architected and organized properly, then SharePoint becomes extremely difficult to manage, usability and performance erode, storage grows exponentially and it becomes difficult to retrieve information. Idera SharePoint information architect ensures that SharePoint implementations are architected and organized efficiently by enabling SharePoint architects and administrators to quickly and easily develop, deploy and maintain SharePoint metadata and taxonomies, dramatically improving search and eDiscovery of critical data.

## PRODUCT HIGHLIGHTS

- Capture and visualize entire farm structures in minutes
- Connect, load and deploy to any site or site collection
- Compare sites to ensure taxonomy compliance
- Create, manage and document SharePoint objects using a powerful graphical design environment
- No agent, service or add-on installations required on the SharePoint Server

## KEY BENEFITS

### Quickly create taxonomies and manage metadata:

Use information architect's graphical design environment to view, create, manage and document SharePoint objects, including sites, list/ libraries, content types (and their relationships), column groups and columns.

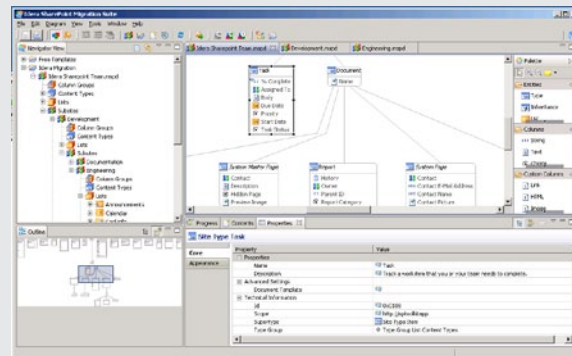
### Easily deploy taxonomies to any site:

Connect, load and deploy taxonomy and metadata changes to any site/site collection including hosted environments.

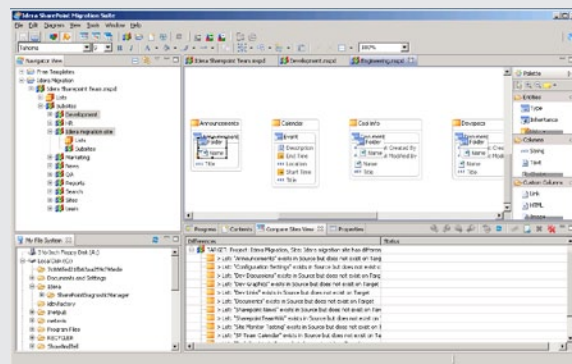
### Quickly compare sites and roll-out changes:

With its compare feature, information architect can quickly pinpoint differences between sites, copy specific objects between sites or synchronize the entire environment from development to staging to production.

idera™



**Idera SharePoint information architect Console**  
With the powerful graphical interface you can easily visualize, edit and create SharePoint taxonomies, and load, synchronize, and provision new taxonomies quickly and efficiently.



### Idera SharePoint information architect 'Site Compare'

With the site compare feature, you can easily compare SharePoint sites to quickly pinpoint differences, copy specific objects between sites or synchronize the entire environment from development to QA to production.

## SYSTEM REQUIREMENTS

- 32-bit Windows 2000 SP4, Windows XP SP2, Windows Server 2003 SP2, Windows Vista, Windows 7, and Windows 2008
- 64-bit Windows 2003 SP2, Windows XP SP2, Windows Vista, Windows 7, and Windows 2008
- Monitor capable of displaying 16 bit color or greater and a resolution of 1024x768

### Supported SharePoint Environments:

- SharePoint Server 2010: Intranet
- SharePoint Server 2010: Internet/Extranet
- SharePoint Foundation 2010
- Microsoft Office SharePoint Server (MOSS) 2/Windows SharePoint Services (WSS) v3
- Microsoft Online (BPOS) and other SharePoint Hosting Providers
- SharePoint Portal Server (SPS) 2003 (source only)
- Windows SharePoint Services (WSS) v2 (source only)
- FAT/NTFS File System (source only).

DOWNLOAD A FREE 14-DAY TRIAL AT WWW.IDERA.COM

## KEY BENEFITS (CONTINUED)

### Increased SharePoint usability:

Through its visual and intuitive design process, Idera SharePoint information architect lets IT professionals construct and deliver taxonomy structures that strike the right balance between the user experience and content “find-ability”.

### Increased governance and compliance:

Information architect is a powerful governance and compliance tool for your SharePoint taxonomy. You can identify differences between sites or ‘master’ site templates, to identify compliance issues and quickly and easily synchronize sites to ensure compliance with company standards.

### Efficiently document SharePoint:

Information architect provides a central point of control for all your SharePoint taxonomy and metadata information. It also enables you to document this information by attaching notes and comments to content types, lists and columns in its architecture diagrams. Information architect saves the information in SharePoint enabling you to collaborate with others and create soft or hardcopy documentation for reference purposes.

## TECHNICAL FEATURES

- **Powerful graphical visualizer and editor:** Easily and graphically create SharePoint taxonomies, and load, synchronize, and provision new taxonomies quickly and efficiently.
- **Attach notes and comments to your site:** Attach notes and comments to content types, lists and columns in a site diagram. Save the information for later use, collaborate with others, or print out a diagram for reference.
- **Work online or offline:** Work offline and synchronize with your production environment when complete, or work directly on your production environment in real-time.
- **Connect to any SharePoint site:** Connect, load and deploy to any site/site collection including hosted environments. (Application respects all SharePoint permissions.)
- **Compare SharePoint sites:** Pinpoint differences between sites, copy specific objects between sites or synchronize the entire environment from development to QA to production. Site compare makes Idera SharePoint information architect an excellent compliance and control tool for your SharePoint taxonomy.
- **No server side installation:** All operations are performed using SharePoint web services. No requirement to install services, add-ons or agents on the SharePoint server.

idera™

2929 Allen Parkway, Suite 3200 Houston, Texas 77019

PHONE +1 713.523.4433  
877.go.idera (464.3372)

FAX +1 713.862.5210  
WEB www.idera.com

TWITTER [www.twitter.com/Idera\\_Software](http://www.twitter.com/Idera_Software)  
FACEBOOK [www.facebook.com/IderaSoftware](http://www.facebook.com/IderaSoftware)  
LINKEDIN [www.linkedin.com/groups?gid=2662613](http://www.linkedin.com/groups?gid=2662613)