

Idera SharePoint content organizer™

Tag and organize your SharePoint content in bulk

Idera SharePoint content organizer enables SharePoint administrators and users to organize their SharePoint content in bulk. Users can apply metadata and relocate files anywhere in SharePoint with just a few clicks.

Administrators that need to organize large amounts of content 'dumped' into SharePoint, or users that need to categorize and locate their documents will find SharePoint content organizer's powerful search, relocation and tagging functions indispensable.

WHY IDERA SHAREPOINT CONTENT ORGANIZER?

Tagging and organizing large volumes of content has always been a time-consuming and frustrating exercise for SharePoint administrators and users. Idera SharePoint content organizer enables you to tag and relocate previously loaded documents, in bulk, with regulatory data, retention dates, and useful keywords, saving large amounts of time. You can classify legacy or imported content to unlock the full potential of SharePoint search and relocate content into the right folders, lists, and sites to maintain its accessibility, security, retention, and lifecycle policies.

PRODUCT HIGHLIGHTS

- Organize SharePoint content in bulk
- Assign new metadata values and new content types
- Move or copy files to different folders, sites, lists or servers
- Load files and folders from file systems to SharePoint libraries in bulk

KEY BENEFITS

Quickly organize your content:

Tag and organize your SharePoint content while preserving key metadata values.

Execute daily tasks faster:

Copy, reorganize and change content type for multiple documents in minutes instead of hours or days.

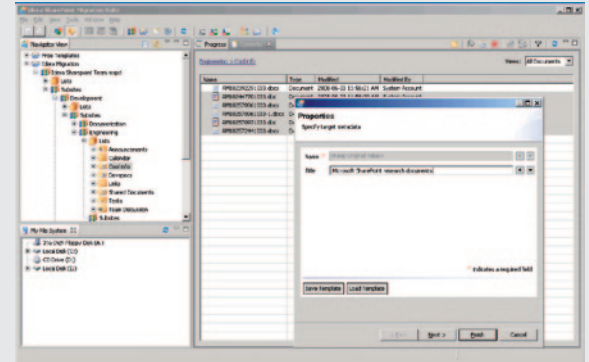
Find items faster:

Filter items in lists based on user-defined criteria.

Bulk tagging and classification:

Users can select multiple files/documents and intelligently assign metadata values and have the ability to copy values from other columns, content types and files.

idera™



Idera SharePoint content organizer Console

Easily select multiple files/documents and intelligently assign metadata values, including the ability to copy values from other columns, content types and files.

SYSTEM REQUIREMENTS

- 32-bit Windows 2000 SP4, Windows XP SP2, Windows Server 2003 SP2, Windows Vista, Windows 7, and Windows 2008
- 64-bit Windows 2003 SP2, Windows XP SP2, Windows Vista, Windows 7, and Windows 2008
- Monitor capable of displaying 16 bit color or greater and a resolution of 1024x768

KEY BENEFITS (CONTINUED)

Bulk copy and move:

Users can select multiple files/documents and move or copy them to different lists or folders, different sites and even different servers.

Upload documents from file systems directly into SharePoint:

Load files and folders from file systems to SharePoint libraries in bulk while assigning content types and column values.

Map values while uploading file system files:

Map values from folder names or file system properties such as Created At, Owner, Title, Subject, etc. to SharePoint fields. You can even remove folder structures during upload. Everything is done quickly and efficiently, no more editing single documents in SharePoint to populate field values.

TECHNICAL FEATURES

- **Easy to use interface:** Familiar Windows Explorer-type interface supports drag-and-drop, multiple windows and more.
- **Bulk tagging:** Select multiple files/documents and intelligently assign metadata values, including the ability to copy values from other columns, content types and files.
- **Detailed list analysis:** Analyze existing items in lists to ensure all values are in columns of the selected items.
- **Bulk copy or move:** Select multiple files/documents and move or copy them to different lists or folders, different sites and even different servers.
- **File system:** Load files and folders from file systems to SharePoint libraries in bulk while assigning content types and column values. Map values from folder names or file system properties such as Created At, Owner, Title, Subject, etc. to SharePoint fields.
- **No server side installation:** All operations are done using SharePoint web services. Server side installation is only required if created By/At and/or Modified By/At properties need to be overwritten.

SUPPORTED SHAREPOINT ENVIRONMENTS

- SharePoint Server 2010: Intranet
- SharePoint Server 2010: Internet/Extranet
- SharePoint Foundation 2010
- Microsoft Office SharePoint Server (MOSS) 2007
- Windows SharePoint Services (WSS) v3
- Microsoft Online (BPOS) and other SharePoint Hosting Providers
- SharePoint Portal Server (SPS) 2003 (source only)
- Windows SharePoint Services (WSS) v2 (source only)
- FAT/NTFS File System (source only)



2929 Allen Parkway, Suite 3200 Houston, Texas 77019

PHONE +1 713.523.4433
877.go.idera (464.3372)

FAX +1 713.862.5210
WEB www.idera.com

TWITTER www.twitter.com/Idera_Software
FACEBOOK www.facebook.com/IderaSoftware
LINKEDIN www.linkedin.com/groups?gid=2662613