

# Idera SharePoint backup™

Backup and Recover SharePoint

Idera SharePoint backup is a powerful full-farm protection product for Microsoft SharePoint environments. By combining lightning-fast file operations and powerful compression, Idera SharePoint backup creates highly compact backup sets in a fraction of the time taken by other backup products. Idera SharePoint backup provides administrators with a complete set of tools to schedule and manage backups, monitor operations in real-time, and broadcast notifications – all through a centralized, easy-to-use management console. Idera SharePoint backup makes it easy to restore farm data and content to their original location or to another location, and administrative burdens are reduced by empowering users to recover their own documents and data through self-service search and restore capabilities.

## WHY IDERA SHAREPOINT BACKUP?

In the year and a half following its release, sales of SharePoint 2007 surpassed one billion dollars -- making it Microsoft's best-selling server platform ever. The explosive growth of SharePoint 2007 is being repeated with SharePoint 2010 and its complement of enterprise-ready capabilities and features. SharePoint has become the place where companies capture information, store critical documents, build business processes, aggregate data from disparate systems, and expose all manner of information for consumption. It is essential that SharePoint environments be protected from their top-level farm components all the way down to the individual documents and items residing within SharePoint site collections and sites. Protection must be automated, reliable, quick, and safe. Idera SharePoint backup meets all of these requirements and is a single, easy-to-use solution to address the challenge of total SharePoint protection.

## PRODUCT HIGHLIGHTS

- Full-farm protection for SharePoint 2010 environments
- High-fidelity granular protection for SharePoint sites and site collections
- Lightning-fast file operations and powerful compression work together to create compact backup sets quickly
- Real-time monitoring of progress and data throughput for backup and restore operations
- Granular content search capabilities for document recovery
- Self-service document recovery for site users – saves administrator time
- Automated scheduling of backup operations
- Centralized management of backup and restore operations across multiple farms

## KEY BENEFITS

### Lightning fast full-farm protection for SharePoint 2010 environments

Proper protection of a SharePoint environment requires the coordinated capture of data that is tied to content databases, service applications, search data, and farm configuration information. In addition, complete SharePoint protection must oftentimes include file system components such as the SharePoint Root, Internet Information Services (IIS) settings, .NET Global Assembly Cache (GAC), and more. Idera SharePoint backup uses enterprise-class Windows Volume Shadow Copy Service (VSS) technology, lightning-fast file operations, powerful compression algorithms, and encryption to rapidly create backup sets that are highly compact and secure.

### Friendly and easy-to-use interface lets you backup up and restore in no time

Just because SharePoint backup and restore is complicated doesn't mean your protection product should be hard-to-use. Recognizing that many organizations don't have dedicated full-time SharePoint administrators, or don't have enough of them, Idera SharePoint backup's management console was designed to be easy-to-use by anybody regardless of their level of SharePoint expertise. Wizards make initiating backup and restore operations very straightforward, and users can track the progress and throughput of operations in real time.

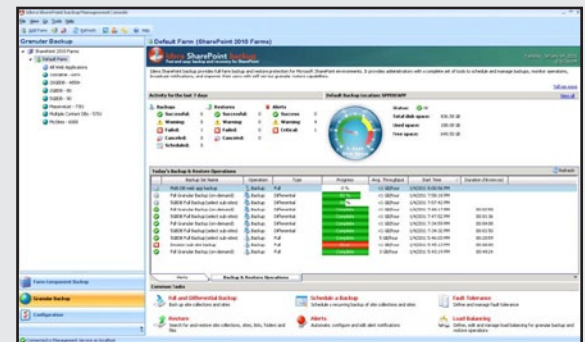
### Fast retrieval and recovery of SharePoint content

Searching for objects (sites, folders, documents, etc.) across backups is a time consuming and challenging task that can take hours, days or even weeks. Idera SharePoint backup has an innovative and powerful IntelliSearch™ engine that searches across multiple backups. This enables users to quickly retrieve the objects they require, whether those objects are entire site collections or individual documents. Retrieval and restoration operations that used to take prohibitively large amounts of time can now be accomplished in minutes with only a couple of clicks.

### Self-service SharePoint Recovery™

In many companies, SharePoint is used by thousands of users and stores hundreds of thousands or even millions of documents. It can be extremely difficult, if not impossible, for a SharePoint farm administrator to handle all user requests for content recovery. Idera SharePoint backup provides site collection and site administrators with the ability to search, browse backups, and recover their own content. Site collection administrators and site owners don't need to wait forever for a single document to be restored by a farm administrator, and farm administrators don't need to spend hours or days handling requests for document recovery – a true win-win situation.

idera™



### Management Console

The Management Console provides centralized access to all of your SharePoint backup and restore operations.

## SYSTEM REQUIREMENTS

### Management Console

- 32-bit operating systems: Windows Server 2003 SP2, Windows Server 2008 SP2, Windows XP SP2, Windows Vista SP2, and Windows 7
- 64-bit operating systems: Windows Server 2003 SP2, Windows Server 2008 SP2, Windows Server 2008 R2, Windows XP Professional SP2, Windows Vista SP2, and Windows 7
- Microsoft .NET Framework 3.5 SP1
- Monitor capable of displaying 16-bit color or greater and a resolution of 1024x768

### Management Service

- 32-bit operating systems: Windows Server 2003 SP2 and Windows Server 2008 SP2
- 64-bit operating systems: Windows Server 2003 SP2, Windows Server 2008 SP2, and Windows Server 2008 R2
- Microsoft .NET Framework 3.5 SP1

### Management Service Repository Database

- SQL Server 2000 SP4, SQL Server 2005 SP3, SQL Server 2008 SP1, or SQL Server 2008 R2

### Supported SharePoint Platforms

- Windows SharePoint Services (WSS) 3.0
- Microsoft Office SharePoint Server (MOSS) 2007
- Microsoft SharePoint Foundation 2010
- Microsoft SharePoint Server 2010

DOWNLOAD A FREE 14-DAY TRIAL AT WWW.IDERA.COM

## KEY BENEFITS (CONTINUED)

### Solid security for peace-of-mind

Active Directory integration is central to Idera SharePoint backup's non-proprietary approach to security. When the product is installed, it is secure by default. Enforcement of standard SharePoint policies and permissions prevents clever users from abusing the product to bypass access control checks and gain access to sensitive SharePoint data and content they should not be able to see.

### Backup automation

Idera SharePoint backup contains a powerful and flexible scheduling engine that takes care of protecting your SharePoint environment when you aren't around. Backups can be scheduled to run hourly, daily, weekly, and with whatever frequency and recurrence your situation requires. In addition, load balancing and fault tolerance features ensure that your backups run predictably and efficiently each and every time.

### Efficiently uses and manages backup storage

Back up your farms and their content based on how often critical information changes, and leverage storage locations throughout your enterprise. Idera's SQL safe™ compression and IntelliCompress™ data compression engines aggressively reduce the size of backup files to keep backup sets small, and support for grooming ensures that storage consumption is carefully watched and controlled to keep storage costs down.

### Only back up content that has changed

Running full backups of entire SharePoint farms and their content requires large amounts of disk space, lengthy backup operations, and unnecessary backups of unchanged, duplicated data. This is both time consuming and costly. With Idera SharePoint backup, users can easily execute manual or scheduled differential backups of just those farm components and granular content that has changed since the last full backup, saving administrators time and valuable storage space.

### Product help information that is actually helpful

Idera SharePoint backup's web help system ensures that you always get up-to-date guidance, product information, and how-to assistance when you need it. As the product and its documentation evolve, you gain access to the new information quickly and easily without expending any effort. In the event that you can't use a web-based help system, you can rest easy knowing that you still have access to the straightforward, easy-to-read packaged help files.

### Managed code and supported access patterns

SharePoint sits on the .NET Framework, so products that use it should as well. Idera SharePoint backup is a 100% managed C# implementation that executes all of its operations through exposed and approved SharePoint application programming interfaces (APIs).

## TECHNICAL FEATURES

### FULL-FARM PROTECTION FEATURES

- **Critical farm coverage:** Protects SharePoint 2010 content databases, service applications, search, and farm configuration data
- **Ancillary target coverage:** Safeguards each farm member's SharePoint Root, Internet Information Services (IIS) configuration, SharePoint webroot folders, .NET Global Assembly Cache (GAC), Certificate Stores, SharePoint-related Registry entries, and associated .NET Framework items
- **Enterprise-ready:** Employs the Windows Volume Shadow Copy Service (VSS) to take quick and consistent snapshots of SharePoint 2010 environments of any size
- **Lightning fast:** Fast file operations are tuned to back up and restore data quickly
- **SQL safe™ technology:** Integrates SQL safe encryption and compression to keep backups safe and compact
- **Differential backups:** Backups execute more quickly and consume less storage space by including only the farm components that have changed since the last full backup
- **Flexible restore destinations:** Restore an entire SharePoint farm as well as individual farm components in-place or out-of-place
- **Coverage map:** Helps you understand how much of your environment is protected by scheduled backups and shows you what isn't protected
- **Resilient operations:** Backup and restore operations proceed even if one or more servers are down

### GRANULAR PROTECTION FEATURES

- **IntelliSearch™:** Find any type of SharePoint object across backup sets, from site collections and sites down to individual documents
- **Item-level recovery:** Restore site collections, sites, lists, folders, list items and documents
- **Self-service recovery:** An easy-to-use web part provides the ability for site collection and site administrators to restore documents
- **High-fidelity recovery:** Restores SharePoint content including properties and security settings, and replaces existing list items and documents
- **Quick restore:** Enables you to restore only the content that is missing from the current SharePoint environment
- **Differential backups:** Save time and storage space by backing up only the content that changed since the last full backup
- **Multiple restore destinations:** Restores content in-place, out-of-place or to your local machine
- **IntelliCompress™:** An innovative compression engine that intelligently selects the best compression method to be applied to the SharePoint content being backed up
- **Fault tolerant operations:** Automatic failover in the event of a network or server outage ensures that granular backups proceed under unforeseen circumstances
- **Load balancing:** Balance the load of your backup and restore operations across some or all of the web front-ends (WFEs) in your SharePoint environment

## MANAGEMENT FEATURES

- **Easy-to-use UI:** Execute difficult backup and restore tasks quickly and easily with a minimal learning curve
- **Real-time monitoring:** View percent completion and data throughput for backup and restore operations
- **Central management console:** A single place to configure, execute and monitor all of your backup and recovery operations across all SharePoint farms and servers
- **Central management repository:** A central repository stores and correlates backup sets, backup schedule data, alerts, and historical information on all backup and restore operations
- **Scheduler:** Powerful and flexible options for establishing recurring backup operations
- **Alerts:** Email alert notification on backup and restore success, failure, load balancing statuses, low disk space and more
- **Grooming:** Manages and controls consumption of disk space by backup history and backup set files
- **Historical view:** Provides an overview of all backup and restore jobs executed including their status and operational details such as which objects were backed up or restored, when and where
- **SharePoint backup today:** Provides a daily summary of all backup and restore operations, scheduled backup tasks, and backup storage utilization
- **FIPS compliance:** Internal security functions, such as password management, are compliant with the FIPS 140 Federal Information Processing Standard
- **Useful guidance:** A new web help system provides up-to-date product documentation and advice

idera™

Idera is headquartered in Houston, TX with offices in London and Melbourne.

US +1 713 523 4433  
877 GO IDERA (464 3372)

EMEA +44 (0) 1753 218410

APAC +61 1300 307 211

MEXICO +52 (55) 8421 6770

BRAZIL +55 (11) 3230 7938

WEB [www.idera.com](http://www.idera.com)

TWITTER [www.twitter.com/Idera\\_Software](http://www.twitter.com/Idera_Software)

FACEBOOK [www.facebook.com/IderaSoftware](http://www.facebook.com/IderaSoftware)

LINKEDIN [www.linkedin.com/groups?gid=2662613](http://www.linkedin.com/groups?gid=2662613)